

How Does Energy Flow In A Food Web

Energy From The Sun Facts

The energy coming from the sun to the Earth's surface is called solar energy. Sun energy is generated in its nucleus mainly through the thermonuclear reaction of hydrogen fusion into helium.



Predators and Prey

What ARE Predators and Prey?

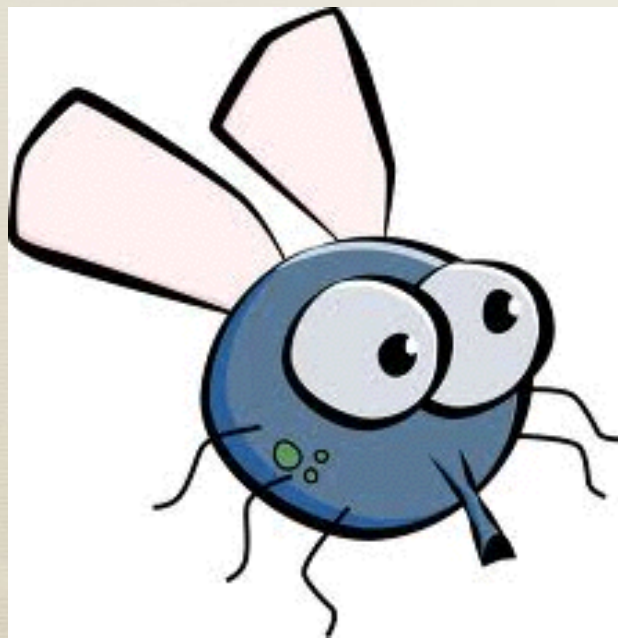
- * Predator: An animal that hunts other animals and kills them for food.
- * Prey: An animal that is hunted by predators.
- * Recall that plants are producers and animals are consumers.





Think About It:

A frog eats a fly. Then a stork eats the frog. Which animals are predators? Which are prey?



More Questions

1. Do you think some animals are neither predators OR prey?
2. From what you know, do you think predators or prey are more populous on Earth?
3. Do you think your answer to the previous question is important? Why?

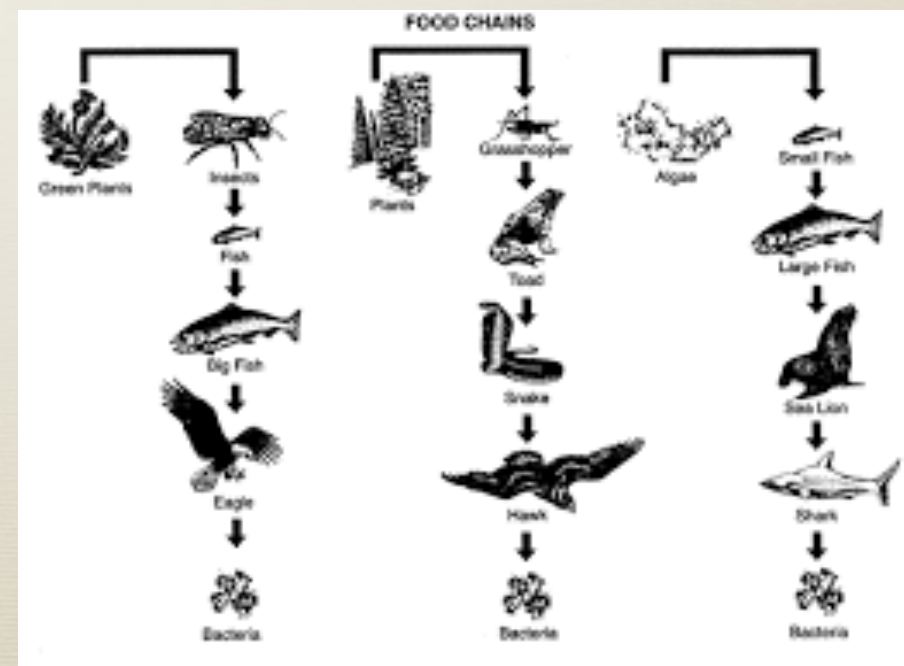
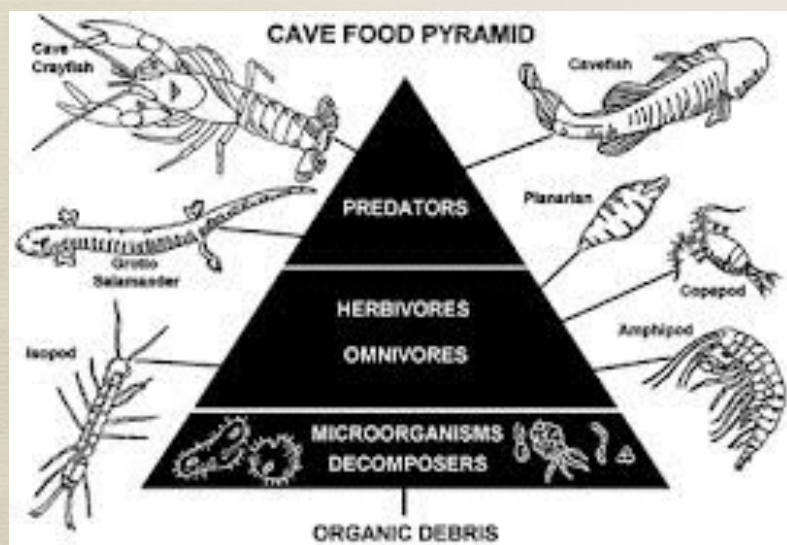
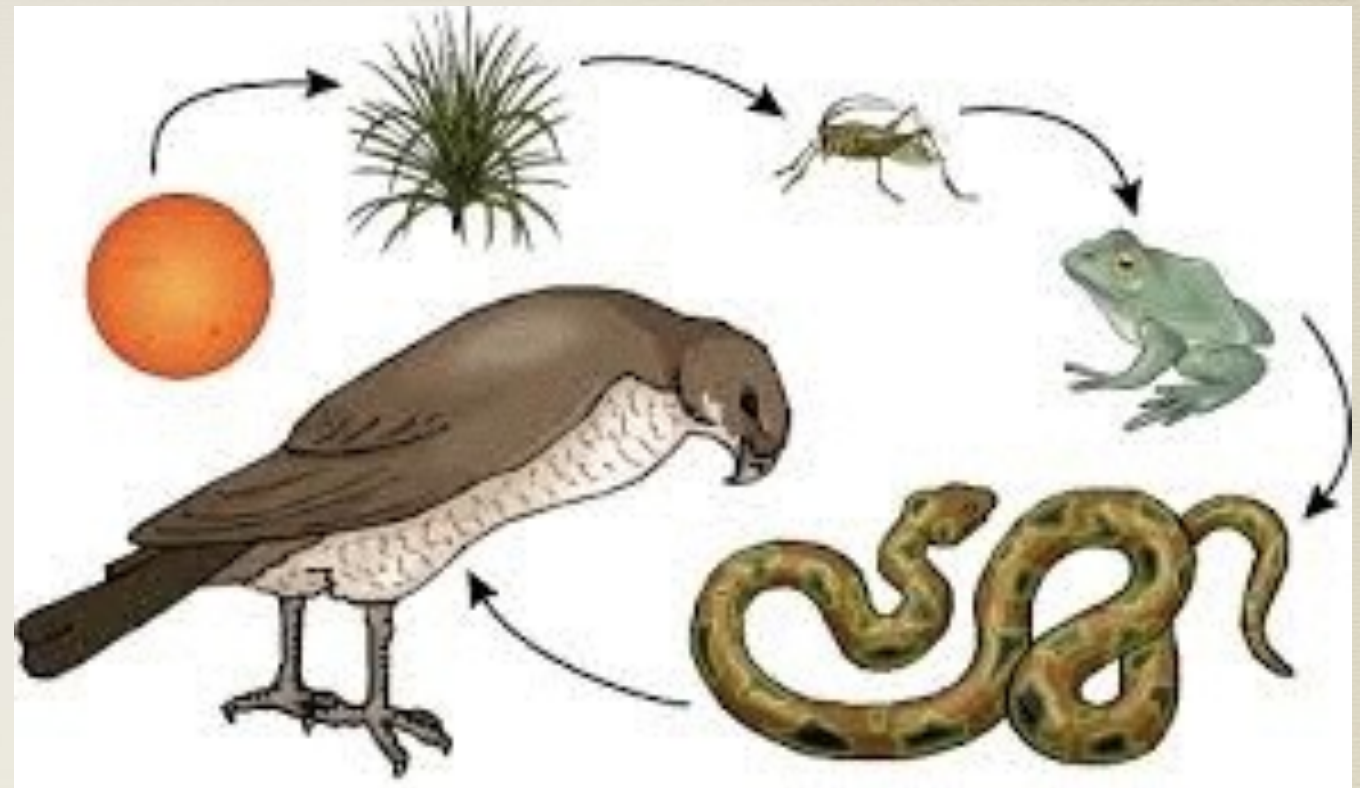


Check out this cool video!

[http://video.nationalgeographic.com/video/
hawk_redtailed_rattlesnakemeal](http://video.nationalgeographic.com/video/hawk_redtailed_rattlesnakemeal)

Food Chains

* <http://studyjams.scholastic.com/studyjams/jams/science/ecosystems/food-chains.htm>



<http://studyjams.scholastic.com/studyjams/jams/science/ecosystems/food-webs.htm>

**A simple
food web**

